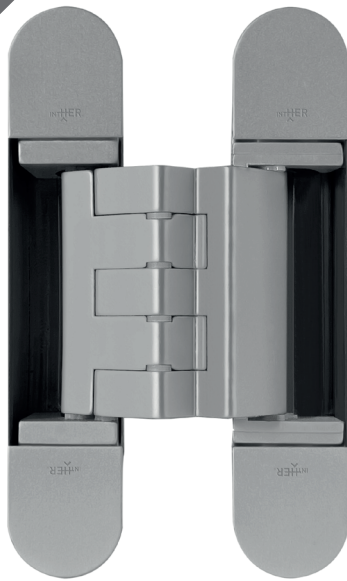


# Concealed hinges

## BETA 100

New



100 kg



3D Regulation

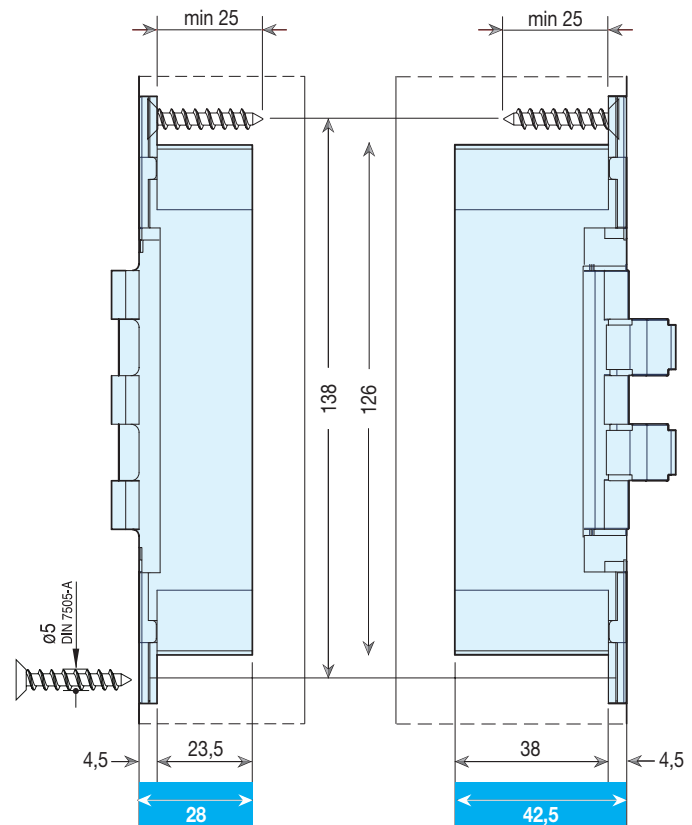
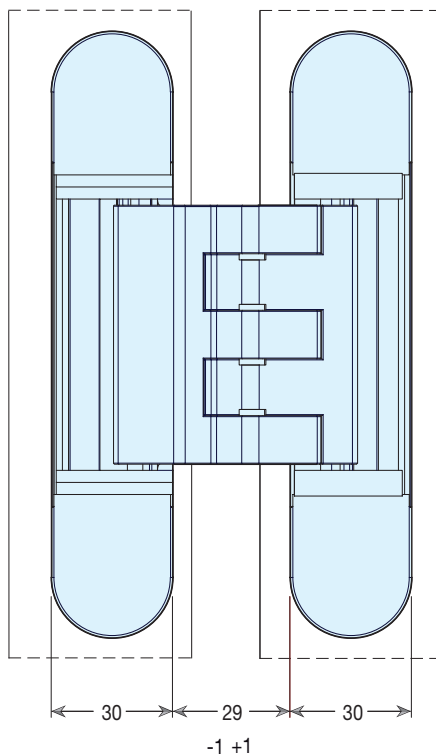
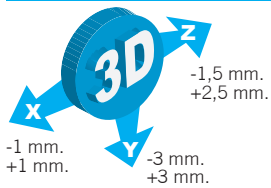
### Technical Specifications

- Heavy duty offset hinge.
- Allows to install claddings up to 18mm thick on the jamb/wall side.
- 3D adjustment
- Minimum door thickness 28 mm and 42.5 mm.
- Fluid machined.
- Easy installation.

Code	Description	Finished	Load capacity	Set
BETA100PL	Concealed hinge REG Beta 100	PL	100 Kg.	3
BETA100NE	Concealed hinge REG Beta 100	NE	100 Kg.	3
BETA100BL	Concealed hinge REG Beta 100	BL*	100 Kg.	3
BETA100CS	Concealed hinge REG Beta 100	CS*	100 Kg.	3
BETA100ORO	Concealed hinge REG Beta 100	ORO*	100 Kg.	3

\*Finishes available on request.

### Dimensions



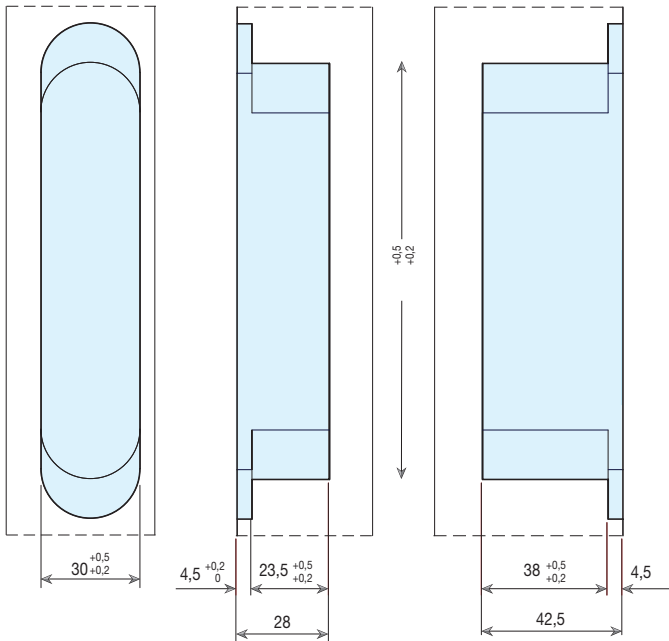
Download the product declaration of performance at [www.inther.es](http://www.inther.es)

# Concealed hinges

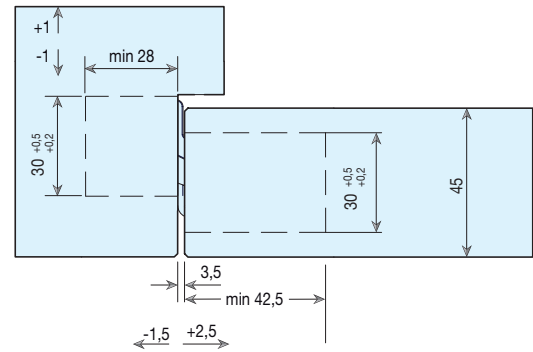
BETA 100

## Machining dimensions

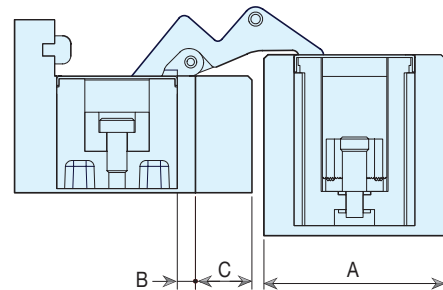
Door



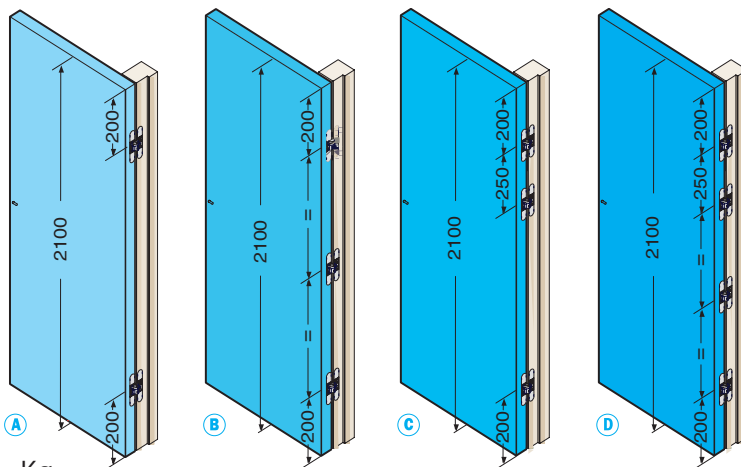
ion



A	B	C
45	41	4
44	4,5	14
40	6,5	12



## Admissible load capacity



### Height from 2100

#### ATTENTION

For H>2100 mm or for use with door closers, please consult the technical department.

The use of door closers reduces the load capacity by 20%.

